



Collaborating for the Advancement of Interdisciplinary Research in Benign Urology
[View as Webpage](#)

ANNUAL CAIRIBU MEETING DECEMBER 3-5

ABSTRACTS DUE OCTOBER 13



Abstracts are accepted from trainees and early-stage investigators (those within 10 yrs of terminal degree)

ALL trainees engaged in non-malignant genitourinary research are invited to submit abstracts

Up to 3 abstracts will be selected before the meeting for oral presentations. Other accepted abstracts will be featured as posters during 1 of 2 poster sessions during the meeting. "Best Poster" awards will be given.

ABSTRACT GUIDELINES (due 10/13/2025)

- **MEETING REGISTRATION.** Covers most meals and all refreshments during breaks. Register [HERE](#)
- **LODGING.** Rooms at 3 nearby hotels are available for <\$130 per night, but the discounted rate is available ONLY until November 2. Use links [HERE](#)
- **TRAVEL.** Info for getting to Madison by air, bus, and personal vehicle available [HERE](#)

CAIRIBU MEETING LINKS (registration, lodging)

Meeting Program Highlights

WEDNESDAY, DEC. 3

- **Trainee Pre-Meeting.** Morning meeting for trainees and early-stage investigators. Begins at 8:00 AM. FREE with CAIRIBU meeting registration. Agenda includes mock grant review session, networking, and roundtables.
- **Complimentary Buffet Lunch.** Available for meeting registrants before the 12:30 PM

meeting start.

- **CAIRIBU Meeting begins at 12:30 PM**

- **Speakers.** *Thomas Chi, MD, MBA* (Professor and Chairman of Urology, University of Alabama at Birmingham) and *Hanneke Verstegen, PhD* (Assistant Professor of Medicine, Harvard Medical School and Beth Israel Deaconess Medical Center)
- **Science.** Bladder and voiding dysfunction
- **Best Abstracts.** Podium presentations by "best abstract" winners
- **CAIRIBU Leaders.** Hear from NIDDK Program Officers and from leaders of the George M. O'Brien Cooperative (U54) Urology Research Centers
- **Poster Session #1.** Coincides with a networking reception
- **Group Dinner.** Memorial Union, University of Wisconsin-Madison

THURSDAY, DEC. 4

- **Breakfast Bootcamps.** Learn (1) how to access and use existing data for urology research or (2) how to involve patients and the community in your research
- **Speaker.** Hear from *J. Quentin Clemens, MD FACS, MSci* (University of Michigan)
- **Science.** Aging in the lower urinary tract, urologic comorbidities, urolithiasis
- **Breakout Discussions and Strategic Planning.** A variety of topics will be discussed, including: innate immunity of the urothelium, phenotyping of non-malignant genitourinary conditions, personalized medicine in urology, and interdisciplinary clinical research
- **Poster Session #2.** Coincides with a networking reception and CAIRIBU awards

FRIDAY, DEC. 5

- **Science.** Benign prostate disease, lower urinary tract dysfunction, urobiome and infection in the lower urinary tract
- **CAIRIBU Community Strategic Planning.** Hear from leaders of CAIRIBU Research Interest Groups focused on advancing science in uro-aging, urobiome, and voiding & urinary tract dysfunction
- **CAIRIBU meeting concludes at 1:30 PM**



EXTRA FUN AT THE CAIRIBU MEETING

See below for how to enter yourself or your team in one of the annual CAIRIBU meeting's activities...

CAIRIBU Family Feud, CAIRIBU Cornhole, CAIRIBU Cutest Pet contest, Pin the Pipette on the lab...

Each year, the CAIRIBU Interactions Core engages attendees in a mix of returning favorites and brand-new activities. This year, you may join in on:

- **CAIRIBU Cornhole Tournament.** Sign up at the meeting with your team to enter the tournament.
- **CAIRIBU Family Feud (new!).** Enter your "lab family" to compete in the first-ever CAIRIBU showdown, hosted by Nathan Tykocki, PhD (Michigan State University). The winning lab takes home the coveted CAIRIBU Family Feud trophy! **To enter, contact the CAIRIBU Interactions Core:** cairibu@urology.wisc.edu
- **CAIRIBU Cookie Decorating.** Take a break and get creative with CAIRIBU cookies. Available to all.
- **CAIRIBU Group Ice Skating.** Lace up and enjoy some time on the ice with fellow meeting attendees. Sign up at the meeting.
- **CAIRIBU Cutest Companion Contest.** Enter your pet's photo BEFORE THE MEETING for a chance to win a custom watercolor portrait by resident artist and Interactions Core website

- designer extraordinaire, Muen Wang. Send photos to cairibu@urology.wisc.edu
- **Pin the Pipette on the Lab.** Can you pin pipettes on photos of the correct CAIRIBU research groups? Players will compete to see how many matches they make. **Send photos of your labs or research spaces to be used for the game** (no personnel or other obvious identifiers, please). Send to cairibu@urology.wisc.edu

CAIRIBU INVESTIGATORS AT OTHER MEETINGS

CAIRIBU Interactions Core staff track the participation at urology meetings of investigators affiliated with CAIRIBU U54 and P20 Centers, CAIRIBU K12 Programs, CAIRIBU Research Interest Groups, and other CAIRIBU initiatives. See below for CAIRIBU-affiliated investigators scheduled to speak, moderate, serve on panels, or presenting abstracts at upcoming meetings.

- [CAIRIBU at AUGS](#) - American Urogynecologic Society PFD Week, Oct. 14-17, Vancouver
- [CAIRIBU at SBUR](#) - Society for Basic Urologic Research annual meeting, Nov. 13-16, Orlando

UPCOMING CAIRIBU EVENTS



CAIRIBU ARCTICS COMMUNITY FORUMS

(*Advancing the Research Capacity of Trainees and Invigators at early Career Stages*). Now in its 5th year, the primary goal of CAIRIBU ARCTICS forums is to develop the professional and research skills of trainees and early-stage investigators. Prior ARCTICS forum topics and speakers may be viewed [HERE](#). The next ARCTICS forum addresses opportunities for research funding from non-traditional sources.

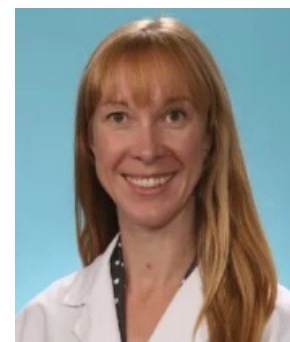
Strategies for Securing Foundation Funding

- **INVESTIGATORS:** [Tanecia Mitchell, PhD](#) (University of Alabama at Birmingham), [Nicole De Nisco, PhD](#) (University of Texas at Dallas), [Indira Mysorekar, PhD](#) (Baylor College of Medicine), [Nicole Gilbert, PhD](#) (Washington University), and [Zohreh Izadifar, PhD](#) (Boston Children's Hospital)
- **FOUNDATION/ORGANIZATION REPS:** [Kim Hollander](#) (Executive Director, [Oxalosis and Hyperoxaluria Foundation](#)) and [Johanny Kugelman-Tonos, PhD](#) (Director of Research, [American Urological Association](#))
- **WHEN:** WEDNESDAY, OCTOBER 8
- **TIME:** 1:00 PM Eastern (12 PM Central | 10 AM Pacific)
- **WHAT:** Investigators will share their experiences in securing funding for research from non-federal sources. Leaders from private funding organizations will describe their funding processes and expectations.

- ZOOM LINK TO JOIN: Available [HERE](#)



The panel of investigators includes, clockwise from top left: **Tanecia Mitchell, PhD**; **Nicole De Nisco, PhD**; **Indira Mysorekar, PhD**; **Nicole Gilbert, PhD**, and **Zohreh Izadifar, PhD**



Foundation and organization representatives, left to right: **Kim Hollander**, Executive Director, Oxalosis and Hyperoxaluria Foundation; and **Johanny Kugelman-Tonos, PhD**, Director of Research, American Urological Association



CAIRIBU ARCTICS Community forums are recorded and posted on the [CAIRIBU YouTube channel](#). Check out the more than 2 dozen recorded CAIRIBU ARCTICS forums [HERE](#).



CAIRIBU GRADUATE STUDENT SEMINARS

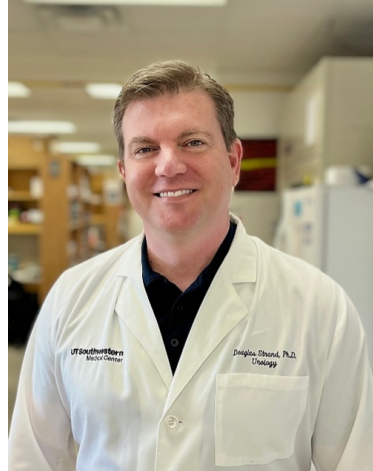
Students from various CAIRIBU-affiliated research groups present their research in seminars aimed at increasing their visibility across the broader urology research community and highlighting the cutting-edge research of CAIRIBU investigators.

The October 2025 seminar features non-malignant prostate research from the laboratory of **Douglas Strand, PhD**, University of Texas Southwestern.

- **WHEN: WEDNESDAY, OCTOBER 15**
- **TIME: 2:00 PM Eastern (1 PM Central | 11 AM Pacific)**
- **ZOOM LINK TO JOIN: Available [HERE](#)**



Emily Paterson, grad student



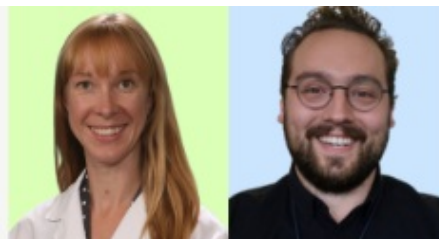
Doug Strand, PhD



CAIRIBU UROBIOME RESEARCH INTEREST GROUP (URIG) RESEARCH HOURS

Virtual CAIRIBU Urobiome Research Hours bridge knowledge gaps in urobiome and urinary tract infection research. Urobiome RIG meetings and knowledge exchanges began in 2021. Prior topics and speakers may be viewed [HERE](#). Written summaries of most all research hours are also available for reading and are frequently published in the new CAIRIBU journal, the quarterly CAIRIBU Compass. Recordings are available on the CAIRIBU YouTube channel [HERE](#). Next up...

U-RIG RESEARCH HOUR
FEAT: NICOLE GILBERT, PHD,
MICHAEL NEUGENT, PHD
10/17/25 [3-4PM ET]
(2PM CT | 12PM PT)



Nicole Gilbert, PhD (Washington University)
Michael Neugent, PhD (University of Texas at Dallas)

Zoom link to join is available [HERE](#)



CAIRIBU URO-AGING RESEARCH INTEREST GROUP (AGING-RIG) KNOWLEDGE EXCHANGES -

Connecting uro-aging interested CAIRIBU and non-CAIRIBU investigators from a variety of fields

Primary goals are to exchange knowledge and stimulate dialogue among a broad cross-section of investigators - scientists, clinicians, and clinician-scientists. Monthly discussions will foster interdisciplinary research collaborations to address critical questions related to aging in the lower urinary tract. Next up...

- **WHEN: MONDAY, OCTOBER 27**
- **TIME: 3:00 PM Eastern (2 PM Central | 12 PM Pacific)**

- ZOOM LINK TO JOIN: Available [HERE](#)



CAIRIBU URO-LIT LIVE VIRTUAL DISCUSSIONS

This monthly series recognizes investigators across the broader CAIRIBU research community who have recently published urology-related research. Authors of 2-3 relatively new papers each month will briefly outline their paper, methods, results, and next steps. Topics will vary by month and will include kidney stones, bladder, aging in the urinary tract, urothelium, urethra, female urology, benign prostate, male reproductive issues, urologic comorbidities, urobiome, and infection.

- **NEXT TOPIC:** Clinical research in female urology

- **WHEN:** WEDNESDAY, OCTOBER 29
- **TIME:** 4:00 PM Eastern (3 PM Central | 1 PM Pacific)
- **WHAT:** Authors **James Hokanson, PhD** (Medical College of Wisconsin) and **Jashkaran Gadhvi, PhD** (UT Southwestern) will briefly discuss their methods and findings followed by ample time for questions, new ideas, and discussion
- **PAPERS BEING DISCUSSED:** For links go [HERE](#)
- **ZOOM LINK TO JOIN:** Available [HERE](#)



James Hokanson, PhD



Jashkaran Gadhvi, PhD

CAIRIBU COMPASS



The *CAIRIBU Compass* is an online, non-refereed journal of and for the CAIRIBU Community. Primary goal is to support the broader urology research community and raise the visibility of urology research. Professional but informal, academic yet accessible, appropriate for works-in-progress and not-ready-for-prime-time research content. Commentaries and opinion pieces are also welcome.

In the NEW ISSUE, read abstracts from summer undergraduate students who participated in urology research at CAIRIBU

October 2025 CAIRIBU Compass HERE

YOUR abstract, description of a sharable resource, commentary, or article could be featured in future issues; contact the [CAIRIBU Interactions Core](#) to find out more

UROLOGY RESEARCH FUNDING

To adapt to the changing research funding landscape, the CAIRIBU Interactions Core recently expanded the search for urology research funding. The CAIRIBU website now features a broader array of announcements from federal agencies, professional societies, organizations, foundations, and industry.

[View expanded list of funding announcements](#)

A few upcoming opportunities are below:

NIH PA-25-307: [NIH Exploratory/Developmental Research Project Grant \(Parent R21 Basic Experimental Studies with Humans Required\)](#). The NIH Exploratory/Developmental Grant supports **exploratory and developmental research projects by providing support for the early and conceptual stages of these projects.** Studies may involve considerable risk but lead to a breakthrough in a particular area or to the development of novel techniques, agents, methodologies, models, or applications that could have a major impact on a field of biomedical, behavioral, or clinical research. This Parent Notice is for basic science experimental studies involving humans (per NOT-OD-18-212, "prospective basic science studies involving human participants"). Posted December 18, 2024. **Applications due October 16, 2025.**

NIH RFA-AG-26-014: [Aging Mammalian Tissues In Vitro \(R21 Clinical Trial Not Allowed\)](#). This NOFO invites applications that propose **interdisciplinary research that aims to develop complex mammalian 3-dimensional (3D) in vitromicrophysiological systems (MPS) to model aging and recapitulate aging processes/phenotypes observed in the whole organism in vivo.** This NOFO is primarily focused on human cell-derived MPS (e.g., tissue chip, organ-on-chip, tissue organoids). However, systems developed using cells of nonhuman mammalian origin are acceptable for benchmarking, system validation, or when their relevance to understanding human aging biology are justified. **Projects must advance the adoption of MPS in aging biology research and as new human-relevant tools for drug discovery.** The R21 activity code is intended for exploratory research at the early and conceptual stages of project development. Preliminary data are not required. An essential feature of responsive applications is the adoption of a multidisciplinary approach that includes expertise in aging biology and from disciplines such as stem cell biology, tissue and organ physiology, microfluidics, bioengineering, computational biology, pharmacology, and biostatistics. Posted August 26, 2025. **Applications due October 20, 2025.**

NIH RFA-AT-25-004: [NIH Blueprint for Neuroscience: Coordination Center for Interoception Research \(BPCCIR\) \(U24, Clinical Trial Not Allowed\)](#). This NOFO is to establish the **NIH Blueprint for Neuroscience Research Coordination Center for Interoception Research (BPCCIR).** "Interoception" encompasses the processes by which an organism or a person senses, interprets, integrates, and regulates signals that represent the internal states. Goals of the NBCCIR are to: 1) promote a multidisciplinary approach for interoception research, and 2) bridge the gap between brain and body studies through a U24 cooperative agreement funding mechanism. **This NOFO aims to foster interactions within the broad community of interoception researchers rather than focusing on disease-specific subdisciplines.** Proposed efforts should: 1) establish and maintain a multidisciplinary team of interoception researchers to oversee and guide NBCCIR activities; 2) create and support digital communication platforms to facilitate networking, collaborations, and information dissemination; 3) plan, organize, and host at least one scientific meeting per year that will include NIH-funded interoception researchers, trainees, and other stakeholders; 4) identify challenges and future technological and scientific opportunities for the field of interoception and develop common terminology, data standards, and common data elements; and 5) generate metrics of success and plans to ensure the sustainability of the interoception research community. Posted September 2, 2025. **Applications due November 10, 2025.**

Pharmaceutical Research and Manufacturers of America Foundation (PhRMA), Inc. predoctoral and postdoctoral fellowships: (1) [Predoctoral Fellowship in Value Assessment-Health Outcomes Research](#) and (2) [Postdoctoral Fellowship in Value Assessment-Health Outcomes Research](#). The PhRMA Foundation seeks proposals that investigate challenges and potential solutions related to **evaluating the delivery, safe use, effectiveness, and value (clinical, patient-centered, and economic) of medicines and other health care interventions.** Proposals could be empirical analyses or studies addressing methodological aspects of the following areas: (1) clinical outcomes assessments; (2) patient-reported and/or patient-centered outcomes; (3) patient health preferences research; (4) clinical and economic outcomes using real-world data and analytic tools; (5) evaluation and outcomes assessments focused on health equity or unmet need; (6) innovative methods for measuring and reporting novel value elements (e.g., clinical, cost,

health preference) from different stakeholder perspectives, especially patients; (7) development of innovative decision and communication tools; (8) patient-centered value assessment frameworks; and (9) empirical health policy research. **Applications due October 30, 2025 @ 12:00 p.m. (noon) Eastern.**

Byron Riesch Paralysis Foundation: [Byron Riesch Paralysis Foundation Research Grant](#). These grants fund research aiming to cure paralysis. Applications are accepted from American investigators located at institutions with established lines of accountability and fiscal responsibility. **The intent of these grants is to promote new and exciting research in the field of paralysis.** The following areas of research are of primary interest to the Byron Riesch Paralysis Foundation: (1) factors relating to re-myelination, axonal preservation or growth, and cell differentiation that may lead to acute or chronic recovery in spinal cord injured individuals; (2) activities that investigate underlying problems associated with neurological disorders such as spasticity, chronic pain, or bladder/bowel function, and sexual function; and (3) drug therapies or other interventions that will limit secondary damage after a spinal cord injury. **Next application deadline, December 12, 2025.**

UROLOGY EVENTS

For all CAIRIBU Community events, as well as those from organizations and societies within the broader urology research community, check the [CAIRIBU EVENTS LISTING](#) on the CAIRIBU website

Wed., October 8, 2025 @ 1:00 pm Eastern (12 PM Central | 10 AM Pacific)

- [CAIRIBU ARCTICS Community Forum: Strategies for Securing Foundation Funding](#) Features a panel of investigators and foundation representatives who will address foundation funding and practical strategies for securing research funding, including how to align proposals with foundation priorities

Thurs., October 9, 2025 @ 4:00 pm Eastern (3 PM Central | 1 PM Pacific)

- [CAIRIBU O'Brien Center Leaders \(OCL\) bi-monthly meeting](#). Leaders of CAIRIBU U54 Urology O'Brien Centers, CAIRIBU Interactions Core staff, and NIDDK Program Officers. (Zoom link by invite only)

October 9–12, 2025, Grapevine, TX

- [Annual meeting of the Sexual Medicine Society of North America](#)

October 14–17, 2025, Vancouver, Canada

- [Annual meeting of the American Urogynecologic Society](#) See who's participating from the CAIRIBU research community [HERE](#)

Wed., October 15, 2025 @ 2:00 pm Eastern (1 PM Central | 11 AM Pacific)

- [CAIRIBU Graduate Student Seminar: Doug Strand Lab](#) (UT Southwestern). Presentations by graduate student Emily Paterson. Introduction by Douglas Strand, PhD

Fri., October 17, 2025 @ 3:00 pm Eastern (2 PM Central | 12 PM Pacific)

- [CAIRIBU U-RIG Research Hour: Bridging Knowledge Gaps in the Urobiome](#) Presentations by Nicole Gilbert, PhD (Washington University) and Michael Neugent, PhD (UT Dallas)

Mon., October 27, 2025 @ 3:00 pm Eastern (2 PM Central | 12 PM Pacific)

- [CAIRIBU Uro-Aging Research Hour Knowledge Exchange](#) Get to know others in the field of uro-aging research, discuss recent findings, develop collaborations, and strategize on ways to advance uro-aging research. Group leaders Scott Bauer, MD, MS (JCSF) and Indira Mysorekar, PhD (Baylor College of Medicine).

Wed., October 29, 2025 @ 4:00 pm Eastern (3 PM Central | 1 PM Pacific)

- [CAIRIBU Uro-Lit Live: Clinical Research in Female Urology](#) Two recent papers will be discussed: (1) Bretschneider et al, J Sex Med, 2025;22(6):1035–42. [DOI: 10.1093/jsxmed/qdaf063](#); and (2) Gadhvi et al, JU Open Plus, 2025;3(7):e00077 [DOI: 10.1097/JU9.0000000000000315](#). Discussants will be James Hokanson, PhD (Medical College of Wisconsin) and Jashkaran Gadhvi, PhD (UT Dallas)



CAIRIBU YOUTUBE

Featuring videos from virtual events and other recordings

CAIRIBU YouTube Playlists are "channels" that correspond to specific research interests

CAIRIBU Interactions Core staff recently categorized all CAIRIBU YouTube content by specific area within the lower urinary tract (more than 120 videos!). Find recordings in which you are most interested (e.g., bladder, prostate, infection, etc.). Content related to trainees is also categorized. Look [HERE](#).



Email the CAIRIBU Interactions Core

George M. O'Brien (U54) Urology Cooperative Research Centers Program

1. University of Wisconsin–Madison (2014–2019 and 2019–2024)
2. Columbia University (2014–2019 and 2020–2025)
3. Stanford University (2021–2026)

Multidisciplinary Urologic Research (KURe) Career Development Programs (K12)

1. Duke University
2. University of Wisconsin–Madison
3. Stanford University

Urological Epidemiology (KUroEpi) Institutional Research Career Development Programs (K12)

1. University of California San Francisco–Kaiser Permanente Northern California
2. University of Michigan

Tracy Rankin, PhD, MPH NIDDK KUH Deputy Director and Program Director, oversees CAIRIBU-affiliated K12 Institutional Career Development Programs

Kristina L. Penniston, PhD, RD

PI, CAIRIBU U24 Interactions Core (U24-DK127726)

penn@urology.wisc.edu

Dept. of Urology, University of Wisconsin School of Medicine and Public Health, Madison, WI

FORWARD P20 Urology Centers

1. Mayo Clinic Rochester (2022–2025)
2. Duke University (2022–2025)
3. Children's Hospital of Philadelphia (2024–2027)
4. Endeavor Health System (2024–2027)

CAIRIBU Interactions Core (U24)

- PI, *Kristina Penniston, PhD, RD*
- Research Program Coordinator, *Mariana Coughlin, MS*
- Website, Digital, and Organizational Management, *Muen Wang, BS*
- Administrative Support, *Theo Ng, BS*
- Research Intern, *Anna Barrett, BS*
- Research Intern, *Isaac Yang, BS*
- Student researcher, *Edison Chiu*
- Student researcher, *Raffael Ho*

NIDDK Program Officers who oversee the CAIRIBU Interactions Core and the U54 Urology O'Brien Centers:

- [Christopher Mullins, PhD](#)
- [Deepak Nihalani, PhD](#)

Links to websites for current CAIRIBU Centers and Programs are on the CAIRIBU website [HERE](#)

Collaborating for the Advancement of Interdisciplinary Research in Benign Urology

CAIRIBU is a community of NIDDK-funded U54 and P20 Urology Centers and K12 Institutional Career Development Programs whose overarching objectives are to address gaps in knowledge related to epidemiology, etiology, development, progression, and expression of non-malignant urologic conditions and to train the next generation of leaders in urology research. The CAIRIBU Interactions Core is the central coordinating body for the CAIRIBU Community.

Learn more about the CAIRIBU Interactions Core [HERE](#)

CAIRIBU - Collaborating for the Advancement of Interdisciplinary Research in Benign Urology | Department of Urology, UW-Madison 1685 Highland Avenue, Medical Foundation Centennial Building | Madison, WI 53705-2281 US

[Unsubscribe](#) | [Update Profile](#) | [Constant Contact Data Notice](#)