

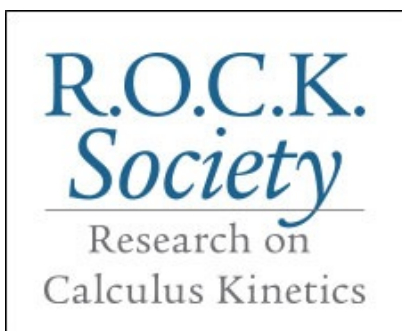


Collaborating for the Advancement of Interdisciplinary Research in Benign Urology

[View as Webpage](#)

UPCOMING UROLOGY EVENTS

2025 ROCK SOCIETY MEETING



Jan. 31-Feb. 1, 2025
Friday & Saturday

Milwaukee, WI
Saint Kate - The Arts Hotel
139 E. Kilbourn Avenue

Investigators and clinicians present and discuss emerging research in kidney stone disease, its pathophysiology, etiologies, clinical expression, risk factors, risk reduction, and innovations in surgical management. **All those interested in stone research should register and participate.** DETAILS & REGISTRATION [HERE](#)

The [ROCK Society](#) is a prestigious urolithiasis-specific organization. The annual meeting is led this year by President [Kristina Penniston, PhD, RD](#) (University of Wisconsin-Madison, PI of the CAIRIBU Interactions Core).

CAIRIBU-affiliated investigators presenting at the ROCK Society meeting include:

- [Tom Chi, MD](#), University of Alabama at Birmingham - PI of a prior CAIRIBU P20 Urology Center (at UCSF)
- [Jonathan Ellison, MD](#), Wisconsin Children's Hospital/Medical College of Wisconsin- Co-Investigator of the multi-center CAIRIBU P20 Urology Center led by Gregory Tasian, MD, MSc, MSCE at Children's Hospital of Philadelphia/University of Pennsylvania
- [Robert Medeiros, MD](#), Duke University - Investigator in the Duke University P20 Urology Center (PI, Pei Zhong, PhD)
- [Muthuvel Jayachandran, PhD](#), Mayo Clinic Rochester - Investigator in the Mayo Clinic P20 Urology Center (PIs, Kevin Koo, MD, MPH and John Lieske, MD)
- [Gregory Tasian, MD, MSc, MSCE](#), Children's Hospital of Philadelphia/University of Pennsylvania - PI of CAIRIBU P20 Urology Center

2025 UROBIOME CONFERENCE

February 24, 2025



8:00 AM to 5:00 PM

University of California San Diego
Scripps Institution of Oceanography

Conference organizer: [Linda Brubaker, MD](#),
Professor, Urogynecology and Reconstructive Pelvic
Surgery, University of California San Diego

CAIRIBU-affiliated and other researchers will address the emerging science of the urobiome and its recently-discovered implications for human health, including common conditions such as urinary tract infection, urinary incontinence, urinary tract stones, and bladder overactivity. **MORE INFORMATION AND LINK TO REGISTER [HERE](#)**

HAVE YOU READ THIS? **NEW PUBLICATIONS**
From CAIRIBU community investigators and trainees

DID YOU KNOW... the CAIRIBU Interactions Core searches the literature monthly to find and archive publications with CAIRIBU-affiliated authors?

View and search a list of publications by CAIRIBU-affiliated investigators [HERE](#) - updated every month

The CAIRIBU Interactions Core uses bibliometric techniques to identify and archive CAIRIBU-affiliated publications. Publications from 2020 forward are there. Sort by journal, publication date, topic, authors' names, and more.

CAIRIBU EVENTS

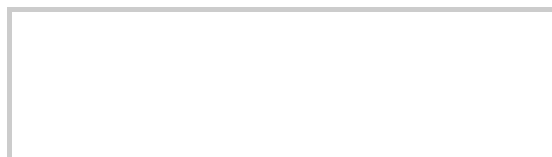
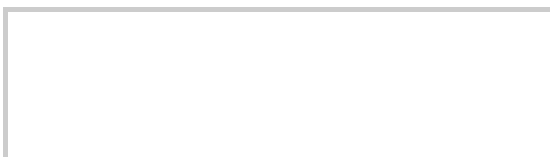


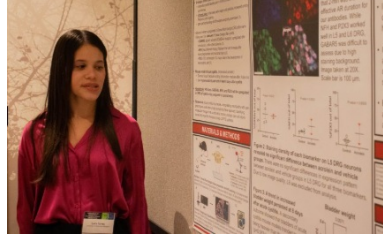
The December 2024 CAIRIBU meeting in Milwaukee, the seventh annual CAIRIBU meeting, was the largest-ever

View "Best Poster" and "Best Abstract" winners [HERE](#)

Also available:

- List of the [10 highest-scoring abstracts](#) (including those recognized for aging-related content)*
- [CAIRIBU Community Award recipients](#) for Outstanding Mentor, CAIRIBU Community Builder, CAIRIBU Engagement, CAIRIBU Distinguished Speaker, Collaboration Catalyst, and Outstanding Abstract Reviewer awards





HIGHLIGHTS FROM THE SCIENTIFIC PROGRAM

Investigators and trainees from 3 current CAIRIBU U54 Urology Centers, 3 current and 1 prior CAIRIBU P20 Urology Centers, and all 5 CAIRIBU K12 Career Development Programs shared their research during the program. Keynote speakers were **George Kuchel, MD,*** Professor of Medicine, Travelers Chair in Geriatrics and Gerontology, and Director of the UConn Center on Aging at the University of Connecticut; and **Johanna Hannan, PhD**, Associate Professor, Department of Urology, University of Wisconsin School of Medicine and Public Health.

**Dr. Kuchel and aging-related abstracts and posters were supported by an award from the Clin-STAR Advances in Aging Research program*

ABSTRACTS & PHOTOS

Link to the abstract booklet, featuring a record 62 abstracts, is [HERE](#)

Photos from prior annual CAIRIBU meetings are [HERE](#)

ATTENDEES & AWARDS

Link to the list of registered meeting participants is [HERE](#)

Link to list of recipients of various CAIRIBU Community awards is [HERE](#)

Mark your calendars now for the 2025 CAIRIBU meeting, Wednesday-Friday, December 3-5 (location TBD)



CAIRIBU CATALYST CONVERSATIONS

Catalyzing interdisciplinary collaborations in urology research. Catalyst Conversations strengthen urology research by stimulating new ideas, introducing novel experimental approaches, and identifying new ways to use existing tools and technologies.

The next CAIRIBU Catalyst Conversation features **Kristin Ebert, MD**, a pediatric urologist in the Department of Urology, Division of Pediatric Urology, at the University of Wisconsin School of Medicine and Public Health. Her research aims to translate the model of transitional care in urology to other diseases and subspecialties. Her talk is titled *"Navigating the Journey: Enhancing Transitional Care for Urology Patients."*

Wednesday, January 29
1:00 PM Eastern
(12 PM Central | 10 AM Pacific)
Zoom link available [HERE](#)





UROBIOME Research Interest Group

UROBIOME Research Interest Group (RIG). Virtual knowledge exchanges are scheduled through 2025. These knowledge exchanges are organized by the [CAIRIBU Urobiome RIG](#) one of several RIGs within the CAIRIBU Community.

Every month, 3rd or 4th FRIDAYS
3:00 PM Eastern (2 PM Central | 12 PM Pacific)

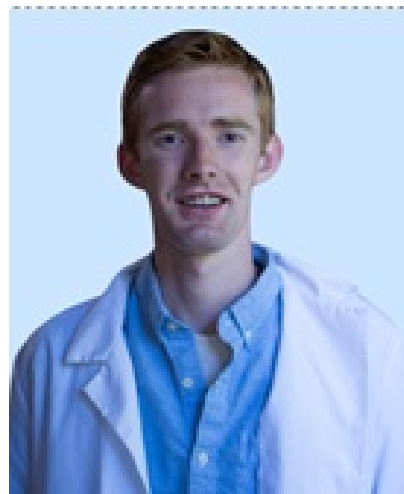
Next: January 24 - Zoom link [HERE](#)



Katy Patras, PhD

Baylor College of Medicine

"The vaginal microbiota and colonization by uropathogens"



***Seth Reasoner, MD-PhD
candidate***

Vanderbilt University

"Pathogen evolution in neuro-genic bladder"

TRAINEES & ESIs



CAIRIBU ARCTICS Community Forums

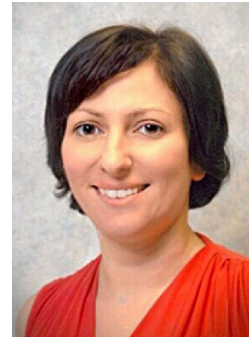
**ARCTICS = Advancing the Research Capacity of Trainees
and Investigators at early Career Stages**

CAIRIBU-affiliated trainees and early-stage investigators meet each year to develop ideas for ARCTICS forums, all aimed at building skills, increasing knowledge, and boosting trainees' abilities to plan and develop independent careers in genitourinary research. Forums are every month, 2nd Wednesdays.

NEXT FORUM: Wednesday, January 8
TOPIC: Orientation to research administration
TIME: 1:00-2:00 PM Eastern (12 PM Central | 10 AM Pacific)

Link to join available [HERE](#)

Navigating the human subjects research review process can be frustrating for non-clinical investigators. Animal use regulations and requirements can also be complex. Join CAIRIBU investigators [Lauren Baker, PhD, DVM](#), [Nathan Tykocki, PhC](#), & [Maria Hadjifrangiskou, PhD](#) as they share experiences and knowledge related to administrative aspects of conducting urology research. *Bring your questions.*



Quarterly, 3rd WEDNESDAYS

Jan - Apr - Jul - Oct 2025

1:00 PM Eastern (12 PM Central | 10 AM Pacific)

2025 grad student seminar series schedule available [HERE](#)

January 15 - Zoom link [HERE](#)

Sakina Plumber

Graduate student, Columbia University
(mentor, Cathy Mendelsohn, PhD)

Dr. Mendelsohn's lab focuses on understanding normal and abnormal biology of the urothelium, a water-tight epithelial barrier lining the urinary outflow tract that protects against infection. Dr. Mendelsohn is one of the PIs of the Columbia University George M. O'Brien Urology Research Center.



Monthly, 3rd THURSDAYS
4:00 PM Eastern (3 PM Central | 1 PM Pacific)
2025 K12 scholar seminar series schedule available [HERE](#)

February 20 - Zoom link [HERE](#)

Vinaya Bhatia, MD

- Pediatric Urologist, Department of Urology, Division of Pediatric Urology, University of Wisconsin School of Medicine and Public Health
- K12 Scholar, University of Wisconsin-Madison Multidisciplinary Urologic Research K12 Career Development Program



CAIRIBU AT SUFU 2025



CAIRIBU trainees and investigators are on the scientific program and will present posters at the annual meeting of the Society of Urodynamics, Female Pelvic Medicine & Urogenital Reconstruction, Feb. 26 - Mar. 1

CAIRIBU investigators giving presentations during the meeting include:

- **Doug Strand, PhD** - *University of Texas Southwestern*. Dr. Strand is one of the leaders of the PI of the George M. O'Brien Urology Research Center at the University of Wisconsin-Madison (PI, William Ricke, PhD).
- **Chad Vezina, PhD** - *University of Wisconsin-Madison*. Dr. Vezina is PI of the UW-Madison K12 Multidisciplinary Urologic Research (KURe) Career Development Program, associate director of the George M. O'Brien Urology Research Center (PI, William Ricke, PhD), and co-PI of the R25 Summer Program for Undergraduate Urology Research (SPUUR; co-PI, Kristina Penniston, PhD).
- **LaTasha Crawford, PhD, VMD** - *University of Wisconsin-Madison, School of Veterinary Medicine*. Dr. Crawford recently completed a K12 scholarship in the UW-Madison KURe Program and is a mentor for the UW-Madison SPUUR. She was previously awarded a CAIRIBU Collaboration Award.
- **Kim Keil Stietz, PhD** - *University of Wisconsin-Madison, School of Veterinary Medicine*. Dr. Stietz is a recipient of a CAIRIBU Collaboration Award and also an Opportunity Pool Award from the Urology O'Brien Center at Stanford University (PI, James Brooks, MD). She is also a Project Leader for the UW-Madison Urology O'Brien Center and a mentor for the UW-Madison SPUUR.
- **Indira Mysorekar, PhD** - *Baylor College of Medicine*. Dr. Mysorekar was the PI of a prior CAIRIBU P20 Urology Center while at Washington University and is currently one of the leaders of the CAIRIBU Lifespan and Urology (aging) Research Interest Group.
- **Quentin Clemens, MD** - *University of Michigan*. Dr. Clemens is one of 2 PIs of the University of Michigan K12 Urological Epidemiology (KUroEpi) Institutional Research Career Development Program (co-PI, Aruna Sarma, PhD).

Additionally, **Zhina Sadeghi, MD** (UC Irvine) and **Renea Sturm, MD** (UC Los Angeles) are both panelists in Thursday's panel on the urethra. Both presented abstracts at the 2024 CAIRIBU meeting. Dr. Sadeghi won "best aging abstract" for her research on the role of fibro-adipogenic progenitor cells in aged female urethra striated muscle and urinary incontinence.

In addition to CAIRIBU-affiliated and -associated trainees who will present posters at the meeting, other CAIRIBU-affiliated investigators with roles at the SUFU meeting include **Ramy Goueli, MD** (UT Southwestern) and **James Hokanson, MD** (Medical College of Wisconsin).

Check the [SUFU meeting website](#) for more details and list of posters

PRE- & POSTDOCTORAL TRAINING OPPORTUNITIES

Training and research opportunities for early-stage investigators and trainees available on the CAIRIBU Kiosk - [HERE](#)

CAIRIBU EVENTS

For all CAIRIBU Community events, as well as those from organizations and societies within the broader urology research community, check the [CAIRIBU EVENTS LISTING](#) on the CAIRIBU website

Wed., Jan. 8	CAIRIBU ARCTICS Community Forum : Orientation to research administration for scientists (Lauren Baker, PhD, DVM, Nathan Tykocki, PhD, and Maria Hadjifrangiskou, PhD)	Virtual, 1:00 PM Eastern (12 PM Central 10 AM Pacific)
Thurs., Jan. 9	Meeting : Bi-monthly CAIRIBU Center Leaders (CCL)	Virtual, 4:00 PM Eastern (3 PM Central 1 PM Pacific)
Wed., Jan, 15	CAIRIBU Graduate Student Seminar : Sakina Plumber, University of Columbia graduate student (mentor: Cathy Mendelsohn, PhD)	Virtual, 2:00 PM Eastern (1 PM Central 12 PM Pacific)
Fri., Jan. 24	CAIRIBU Urobiome Research Interest Group Research Hour : Katy Patras, PhD (Baylor College of Medicine) and Seth Reasoner, MD-PhD candidate (Vanderbilt University (mentor: Maria Hadjifrangiskou, PhD)	Virtual, 3:00 PM Eastern (2 PM Central 12 PM Pacific)
Wed., Jan. 29	CAIRIBU Community Catalyst Conversation : Kristin Ebert, MD, Department of Urology, Division of Pediatric Urology, University of Wisconsin School of Medicine and Public Health	Virtual, 2:00 PM Eastern (1 PM Central 11 AM Pacific)
Wed., Feb. 12	CAIRIBU ARCTICS Community Forum : Data science for the non-data scientist: part 1. Presenters will demystify and explain concepts related to large data sets, data formats, coding for manipulating data, working with relational databases and unstructured data, cleaning data, and visualizing data	Virtual, 1:00 PM Eastern (12 PM Central 10 AM Pacific)
Thurs., Feb. 13	Meeting : Bi-monthly CAIRIBU O'Brien Center Leaders (OCL)	Virtual, 4:00 PM Eastern (3 PM Central 1 PM Pacific)



CAIRIBU YOUTUBE

Featuring videos from virtual events and other recordings

CAIRIBU YouTube Playlists serve as "channels" that correspond to your specific research interests

CAIRIBU Interactions Core staff recently categorized all CAIRIBU YouTube content by specific area within the lower urinary tract (nearly 100 videos!). Now you can quickly find recordings in which you are most interested (e.g., bladder, prostate, infection, etc.). Content related to trainees is also categorized. Look [HERE](#).



Email the CAIRIBU Interactions Core

George M. O'Brien (U54) Urology Cooperative Research Centers Program

1. University of Wisconsin-Madison (2014-2019 and 2019-2024)
2. Columbia University (2014-2019 and 2020-2025)
3. Stanford University (2021-2026)

Multidisciplinary Urologic Research (KURE) Career Development Programs (K12)

1. Duke University
2. University of Wisconsin-Madison
3. Stanford University

Urological Epidemiology (KUroEpi) Institutional Research Career Development Programs (K12)

1. University of California San Francisco-Kaiser Permanente Northern California
2. University of Michigan

[Tracy Rankin, PhD, MPH](#), NIDDK KUH Deputy Director and Program Director, oversees CAIRIBU-affiliated K12 Institutional Career Development Programs

Kristina L. Penniston, PhD, RDN

PI, CAIRIBU U24 Interactions Core (U24-DK127726)

penn@urology.wisc.edu

Dept. of Urology, University of Wisconsin School of Medicine and Public Health, Madison, WI

FORWARD P20 Urology Centers

1. Mayo Clinic Rochester (2022-2025)
2. Duke University (2022-2025)
3. Children's Hospital of Philadelphia (2024-2027)
4. NorthShore University HealthSystem (2024-2027)

CAIRIBU Interactions Core (U24)

- PI, [Kristina Penniston, PhD, RDN](#)
- Research Communications & Outreach, [Mariana Coughlin, MS](#)
- Researcher, [Muen Wang, BS](#)
- Admin Assistant, [Annie Mao](#)
- Student researcher, [Anna Barrett](#)

NIDDK Program Officers who oversee the CAIRIBU Interactions Core and the U54 Urology O'Brien Centers:

- [Christopher Mullins, PhD](#)
- [Deepak Nihalani, PhD](#)

Links to websites for CAIRIBU Centers and Programs are on the CAIRIBU website [HERE](#)

Collaborating for the Advancement of Interdisciplinary Research in Benign Urology

CAIRIBU is a community of NIDDK-funded U54 and P20 Urology Centers and K12 Institutional Career Development Programs whose overarching objectives are to address gaps in knowledge related to epidemiology, etiology, development, progression, and expression of non-malignant urologic conditions and to train the next generation of leaders in urology research. The CAIRIBU Interactions Core is the central coordinating body for the CAIRIBU Community.

Learn More Here

