



Collaborating for the Advancement of Interdisciplinary Research in Benign Urology

[View as Webpage](#)

CAIRIBU EVENTS



Building the urology research work force pipeline

Friday, July 19 (virtual)

1:00 - 3:00 PM Eastern (12-2 PM Central | 10-12 PM Pacific)

Undergraduate students from CAIRIBU Urology O'Brien Centers will describe the various urology-related research projects in which they are engaged during their summer research experiences. CAIRIBU O'Brien Center leaders, NIDDK Program Officers, and students from across all Centers will provide feedback. Students will represent the O'Brien Centers at Columbia University, Stanford University, and the University of Wisconsin-Madison. **ALL are welcome to hear from these students and to encourage them to pursue careers in urology research.** To join the jamboree, find Zoom link [HERE](#)



Wednesday-Friday, December 4-6 in Milwaukee, WI

Abstracts from trainees and early-stage investigators will be accepted. **"Best Abstract" and "Best Poster" awards available.** A few best abstracts will be selected for podium presentations. Speakers in scientific sessions will include investigators from current CAIRIBU U54 and P20 Centers and from CAIRIBU K12 Career Development Programs. Networking and interactions sessions are scheduled. A trainee-focused "pre-meeting" is planned for Wednesday, Dec. 4, 8:00-12:00 PM.

This year, the CAIRIBU meeting emphasizes aging-related function and dysfunction in the

lower urinary tract. [Dr. George Kuchel](#), Professor of Medicine and Director of the UConn Center on Aging at the University of Connecticut, will be a keynote speaker and will also participate in the trainee pre-meeting program Wednesday morning, December 4. MARK YOUR CALENDARS NOW FOR DECEMBER 4-6 in MILWAUKEE.

More meeting details [HERE](#)

TRAINEES & ESIs

K12 Career Development Positions

Launch your career from early-stage to independent urology investigator or clinician-scientist. Apply for a position at a CAIRIBU K12 Institutional Career Development Program. Currently, the Multidisciplinary Urologic Research Career Development Program at [Duke University](#) (PI, Cindy Amundsen, MD) and the Urologic Epidemiology Career Development Program at the [University of California San Francisco](#) (PI, Alison Huang, MD) are accepting applications for positions in 2024.



Every other month, 3rd WEDNESDAYS

2:00 PM Eastern (1 PM Central | 11 AM Pacific)

Schedule available [HERE](#)

July 17 - Zoom link [HERE](#)

Layla Jeries

Graduate student, University of Alabama at Huntsville (mentor, Tanya Sysoeva, PhD)



Namrata Sawant

Graduate student, University of Texas Dallas (mentor, Nicole De Nisco, PhD)

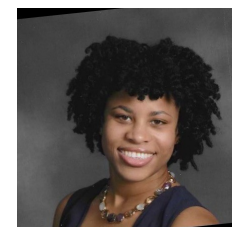


Dr. De Nisco's lab studies the host inflammatory response during RUTI. Dr. Sysoeva's lab studies horizontal gene transfer in complex microbial communities.

Sept. 18 - Zoom link [HERE](#)

Lanie Briggs

Graduate student, University of Alabama at Huntsville



REQUEST FOR PUBLIC COMMENTS

Proposed NEW Framework for NIH

Various scientific organizations are encouraging comments on a recent proposal from the US House of Representatives Energy and Commerce Committee to restructure the National Institutes of Health. Read the article from ScienceInsider (June 14, 2024) [HERE](#). ScienceInsider is a policy blog on the Science website featuring articles by Science magazine staff.

Among other proposed changes, the National Institute of Diabetes, Digestive and Kidney Diseases would be collapsed into a larger institute with two other currently-separate institutes. Read and download the full committee report [HERE](#). Stakeholders may submit feedback on the framework or provide additional thoughts and suggestions by sending an email to NIHReform@mail.house.gov by August 16, 2024.

CAIRIBU Community investigators are strongly urged to read the proposal, submit feedback, and contact their congressional representatives with your thoughts. If desired, FEEL FREE TO SHARE YOUR COMMUNICATIONS AND COMMENTS WITH THE CAIRIBU INTERACTIONS CORE; we will keep track of outreach, numbers, and specific suggestions.

EVENTS & DEADLINES

For all CAIRIBU Community events, as well as those from organizations and societies within the broader urology research community, check the [EVENTS LISTING](#) on the CAIRIBU website

Wed, July 3	I3: Innovative Idea Incubator (UW-Madison Urology O'Brien Center series): Emily Tran , PhD candidate	Virtual, 4 PM Eastern
Thurs, July 11	Meeting: CAIRIBU Community Leaders (CCL)	Virtual, 5 PM Eastern
Wed, July 17	CAIRIBU Graduate Student Seminar: Layla Jeries & Namrata Sawant	Virtual, 2 PM Eastern
Fri, July 19	CAIRIBU Urology O'Brien Center Summer Student Research Jamboree	Virtual, 1 PM Eastern
Thurs, August 8	Meeting: CAIRIBU O'Brien Center Leaders (OCL)	Virtual, 4 PM Eastern
Fri, August 16	Deadline: Comments on US congressional committee proposal for NIH reform	Email NIHReform@mail.house.gov

Openings! Postdocs, Scholars, and More

Check the [CAIRIBU Kiosk](#) for updates



NOTABLE RECENT PUBLICATIONS (CAIRIBU-affiliated authors are highlighted)

[*Synthesis of current pediatric urinary microbiome research.*](#) Front Pediatr 2024. Layla M Jeries, Tatyana A Sysoeva, Lisa Karstens, Maryellen S Kelly

[*Creating a community advisory board for pediatric bladder health.*](#) Front Pediatr 2024. Emily Teehan, Ashley Phord-Toy, Pranaya Venkatapuram, **Kathleen M. Kan**

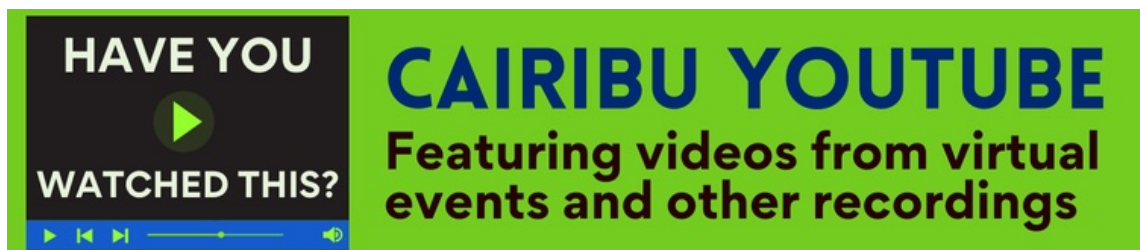
[*OnabotulinumtoxinA is now an important tool for managing pediatric neurogenic lower urinary tract dysfunction.*](#) Front Pediatr 2024. Brendan T Frainey, Douglass B Clayton

[*The role of biomarkers in early identification of acute kidney injury among non-critically ill patients.*](#) J Nephrol 2024. Safadi S et al ...and John C Lieske

[*Magnesium supplementation increases urine magnesium and citrate in stone formers with hypomagnesuria.*](#) J Ren Nutr 2024. Kristina L Penniston, Mariana M Coughlin, R Allan Jhagroo

[*MV140 mucosal vaccine induces targeted immune response for enhanced clearance of uropathogenic E. coli in experimental urinary tract infection.*](#) Vaccines (Basel) 2024. Paula Saz-Leal et al ...and Indira U Mysorekar

[*Prospective follow-up of overactive bladder symptoms in patients with prior SARS-Cov-2 infection.*](#) Neurourol Urodyn 2024. Priya Padmanabhan, Ly Hoang Roberts, Michael B Chancellor, Kenneth M Peters, Bernadette MM Zwaans



SEE BELOW FOR SOME OF THE CONTENT:

[*CAIRIBU Catalyst Conversations.*](#) Cutting-edge presentations by experts in their fields. [Adam Kuchnia, PhD](#) (UW-Madison Nutritional Sciences Department) recently discussed his research on assessing muscle quality, sarcopenia, and mitochondrial function.

[*CAIRIBU Urobiome Knowledge Exchanges.*](#) Recorded presentations and panels collectively garnering nearly 4,000 views!

[*2023 CAIRIBU Collaborative Science workshop series.*](#) Five recorded virtual workshops led by [Whitney Sweeney, PhD](#), Team Scientist at the UW-Madison Institute for Clinical and Translational Research

[*CAIRIBU ARCTICS Community Forums.*](#) Presentations on a variety of topics of interest to trainees and early-stage investigators

[*CAIRIBU K12 Scholar Seminars.*](#) Presentations by current and former CAIRIBU K12 scholars. Thus far 15 recordings have logged nearly 1,200 views.

[*New CAIRIBU YouTube Playlists*](#)

CAIRIBU Interactions Core staff recently categorized all CAIRIBU YouTube content by specific lower urinary tract research area. Now you can quickly find the recordings in which you are most interested (e.g., bladder, prostate, infection, etc.). Take a look [HERE](#)



Kristina L. Penniston, PhD, RDN

**PI, CAIRIBU U24 Interactions Core
(U24-DK127726)**

penn@urology.wisc.edu

Dept. of Urology, University of Wisconsin School of
Medicine and Public Health, Madison, WI

Email the CAIRIBU Interactions Core

**George M. O'Brien (U54) Urology Cooperative
Research Centers Program**

- University of Wisconsin-Madison (2014-2019 and 2019-2024)
- Columbia University (2014-2019 and 2020-2025)
- Stanford University (2021-2026)

**Multidisciplinary Urologic Research (KURe)
Career Development Programs (K12)**

- Duke University
- University of Wisconsin-Madison
- Stanford University

**Urological Epidemiology (KUroEpi) Institutional
Research Career Development Programs (K12)**

- University of California San Francisco-Kaiser Permanente Northern California
- University of Michigan

Tracy Rankin, PhD, MPH, NIDDK KUH Deputy Director and Program Director, oversees CAIRIBU-affiliated K12 Institutional Career Development Programs

FORWARD P20 Urology Centers

- Mayo Clinic Rochester (2022-2025)
- Duke University (2022-2025)

**Exploratory Centers (P20) for Interdisciplinary
Research in Benign Urology**

- Michigan Interdisciplinary Center for Urology Research and Education (MI-CURE) (2021-2023)

CAIRIBU Interactions Core (U24)

- PI, ***Kristina Penniston, PhD, RDN***
- Research Program Coordinator, ***Jennifer Allmaras, MPH***
- Research Communications & Outreach, ***Mariana Coughlin, MS***
- Researcher, ***Muen Wang, BS***
- Research Administration Specialist, ***Lori Uttech-Hanson, MA Ed***
- Student researcher, ***Anna Barrett***

NIDDK Program Officers who oversee the CAIRIBU Interactions Core and the U54 Urology O'Brien Centers are ***Chris Mullins, PhD*** and ***Deepak Nihalani, PhD***

Links to websites for CAIRIBU Centers and Programs are on the CAIRIBU website [HERE](#)

Collaborating for the Advancement of Interdisciplinary Research in Benign Urology

CAIRIBU is a community of NIDDK-funded U54 and P20 Urology Centers and K12 Institutional Career Development Programs whose overarching objectives are to address gaps in knowledge related to epidemiology, etiology, development, progression, and expression of non-malignant urologic conditions and to train the next generation of leaders in urology research. The CAIRIBU Interactions Core is the central coordinating body for the CAIRIBU Community.

Learn More Here

CAIRIBU - Collaborating for the Advancement of Interdisciplinary Research in Benign Urology | Department of Urology, University of Wisconsin School of Medicine and Public Health 1685 Highland Avenue, Medical Foundation Centennial Building | Madison, WI 53705-2281 US

[Unsubscribe](#) | [Update Profile](#) | [Constant Contact Data Notice](#)