
Collaborating for the Advancement of Interdisciplinary Research in Benign Urology



Countdown to Annual Meeting 2022: What You Need to Know

*Wed., November 30 through Fri., December 2
North Bethesda Marriott Hotel & Conference Center*

All CAIRIBU investigators and trainees from current CAIRIBU Centers and Programs are expected to participate

- You must REGISTER for the meeting: go [HERE](#).
- HOTEL ROOMS are booking up fast: reserve [HERE](#) (group rate is available only through November 8)
 - For hotel accessibility info go [HERE](#)
- ABSTRACTS submitted by trainees and ESIs (within 10 years of terminal degree) are accepted only through October 19. For preparation and submission instructions, go [HERE](#).
- All CAIRIBU trainees and ESIs are encouraged to attend the annual TRAINEE/ESI PRE-MEETING, Wednesday, November 30 from 9:00 AM to 12 noon. For program details, go [HERE](#). NIDDK Program Officers will talk about GUDMAP, RBK, KPMP, and the NIDDK Biorepository. Investigators from dkNET will be available to describe more research resources. Also hear from successful former trainees about their career transitions.
- Time and space for informal NETWORKING and COLLABORATIVE RESEARCH DISCUSSIONS available both days, Wednesday and Thursday.
- KEYNOTE and FEATURED SPEAKERS are **Geolani Dy, MD** (Oregon Health & Science University), **Kevin McVary, MD** (Loyola University Chicago), and **Ramy Goueli, MD** (UTSW). Other presenters in scientific sessions include investigators and trainees from CAIRIBU-affiliated O'Brien Centers, P20 Centers, and K12 Career Development Programs.

OFFICIAL CAIRIBU MEETING START - 1:00 PM, Wednesday, Nov. 30

OFFICIAL CAIRIBU MEETING END - 1:00 PM, Friday, Dec. 2

Note that abstracts accepted for moderated poster sessions during the meeting will be limited to 50; best abstract and best poster awards will be given.

Funding

CAIRIBU Collaboration Awards

The CAIRIBU Interactions Core now requests applications for CAIRIBU Collaboration



Awards, each up to \$50,000 direct costs for one year. Up to 2 awards will be given. **DEADLINE is December 9, 2022.** Specific goals for both the research team and the research strategy are outlined [HERE](#).



Duke University KURe Program Applications

The Multidisciplinary K12 Urologic Research (KURe) Career Development Program at Duke University, one of 4 K12 Programs under the CAIRIBU umbrella, attracts talented clinical, translational, and basic science researchers (MDs, DOs, PhDs, and MD/PhDs) from diverse disciplines who are building independent research careers using collaborative, multidisciplinary approaches to non-malignant urological research. APPLICATIONS ARE NOW BEING ACCEPTED. Details about applications process [HERE](#).

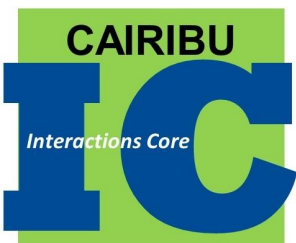
Duke University KURe Program Leaders: Program Director, [Cindy Amundsen, MD](#); Program Coordinator, [Friederike Jayes, DVM, PhD](#); Program Career Development Specialist, [Rebecca Kameny, PhD](#)



Innovative Science Accelerator Program

The ISAC Program funds innovative, high-risk/high-reward, cutting-edge, and potentially paradigm-shifting research that accelerates innovation in the areas of science of interest to the Kidney-Urologic-Hematologic research communities. ISAC awards are NOT for pilot & feasibility projects. **Three-page applications may request up to \$100,000 (direct + indirect costs) Total Costs for one year.** NEXT SUBMISSION DEADLINE IS DECEMBER 15. More information [HERE](#).

Your Input Needed!



CAIRIBU Census

All CAIRIBU-affiliated investigators and trainees are expected to complete the census

Census link [HERE](#) (takes a little more than 5 min for most)

Data collected will help us understand demographic and research-related details about CAIRIBU investigators and trainees and the workforce of investigators who study non-malignant urologic diseases and disorders. Data will also be used to identify and address any instances of real or apparent inequities and to identify groups within CAIRIBU who may be eligible for specific opportunities that may arise, for example grant applications and speaker opportunities. **Data collected are confidential**; the CAIRIBU Interactions Core is bound by and adheres to all NIH-guidelines for protecting investigators' demographic information. Guidance and approval from the UW-Madison Health Sciences IRB was obtained. All analyses related to gender, race, ethnicity, disability, and/or disadvantaged background will report aggregate statistical findings only and will not identify individuals. [COMPLETE THE CENSUS NOW.](#)

Biannual Progress

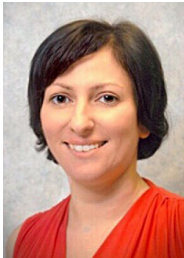
All CAIRIBU-affiliated investigators and trainees are expected to complete the biannual CAIRIBU Progress Survey

Survey link [HERE](#) (mean completion time = 6 min)

PLEASE COMPLETE BY OCTOBER 18. IF YOUR RESPONSE IS RECEIVED BY THEN, YOU'LL BE ENTERED INTO A DRAWING FOR AN AMAZON GIFT CARD. The CAIRIBU Interactions Core collects these data twice a year to understand the impact of CAIRIBU efforts on cross-institutional research, collaborative proposals, and funding and to elucidate the mechanisms by which advancements and accomplishments occur. **The overall goal is to use these data to improve efforts to enhance and foster inter-center/program interactions.** CAIRIBU-affiliated investigators at all career stages (including trainees and early stage investigators) should participate. Survey questions ask about your personal professional and scientific accomplishments over the past 6 months and also about grants you have applied for and been awarded.



VIRTUAL EVENTS

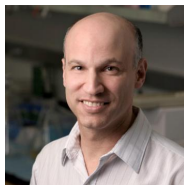


CAIRIBU ARCTICS COMMUNITY FORUM



VIRTUAL - Wed., October 19, 1:00 PM Eastern
(12 noon Central | 10 AM Pacific)

How to write a good CV and biosketch. Hear tips from successful CAIRIBU PIs on how to build a CV and bio sketch that will enhance your career and funding opportunities. **ALL ARE WELCOME.** Zoom link available [HERE](#). Speakers include **Sydney Goggins**, Graduate Teaching Assistant and professional writing expert from the UW-Madison Writing Center and:



- **Maria Hadjifrangiskou, PhD** – PI of CAIRIBU P20 Exploratory Center and Associate Director, Vanderbilt Institute for Infection, Immunology and Inflammation; Associate Professor of Pathology, Microbiology and Immunology; Associate Professor in Urology
- **Jill Macoska, PhD** – UW-Madison Urology O'Brien Center Project Leader and Alton J. Brann Endowed Distinguished Professor of Science and Mathematics, University of Massachusetts Boston
- **Jonathan Pollack, MD, PhD** – Stanford University Urology O'Brien Center Co-Investigator and Professor of Pathology
- **Chad Vezina, PhD** – UW-Madison Urology O'Brien Center Associate Director and Associate Professor of Comparative Biosciences, University of Wisconsin-Madison



CAIRIBU GRADUATE STUDENT SEMINAR

VIRTUAL - Wed., November 2, 1:00 PM Eastern
(12 noon Central | 10 AM Pacific)

Malique Jones, graduate student at Michigan State University, will describe her doctoral research. All are welcome; Zoom link [HERE](#). Malique earned a B.S in Biology at Bennett College in Greensboro, NC and



completed a post-baccalaureate program at the University of South Carolina School of Medicine in Columbia, SC. Her mentor at Michigan State University is **Nathan Tykocki, PhD**, Assistant Professor of Pharmacy & Toxicology and a Co-Investigator of the Beaumont Health-Oakland University P20 Exploratory Center (PIs, **Bernadette Zwaans, PhD** and **Michael Chancellor, MD**).



CAIRIBU WRITING CLUB - Drop in...

VIRTUAL - Wed., October 19, 6:00 PM Eastern
(5 PM Central | 3 PM Pacific)

Stakeholder and community engagement in research is a top NIH priority and that of other funding agencies as well. All are invited. Zoom link available [HERE](#). Even investigators in basic science are encouraged to include community engagement strategies in their research proposals. Drop in to learn tips for writing an engagement plan - for involving patients, their families, clinicians, other scientists, funders, or other community members. Session is led by stakeholder/community engagement expert **Gay Thomas, MA**. She has helped 100s of biomedical researchers who have gone on to obtain funding from NIH, PCORI, and other funding agencies. For more information or to connect directly with Gay, write to Gay@GRThomasAdvisors.com.

EVENTS CALENDAR

- Oct 5: [CAIRIBU Graduate Student Seminar](#) (1 PM Eastern, virtual)
- Oct 13: [CAIRIBU O'Brien Centers Leaders meeting](#) (4 PM Eastern, virtual)
- Oct 13-14: [AUA Early-Career Investigators Workshop](#) (AUA Headquarters, Linthicum, MD)
- Oct 17-18: [NIDDK Workshop on Pelvic Pain](#) (Virtual)
- Oct 19: [CAIRIBU ARCTICS Community Forum: Writing CVs & Biosketches](#) (1 PM Eastern, virtual)
- Nov 2: [CAIRIBU Graduate Student Seminar](#) (1 PM Eastern, virtual)
- Nov 10: [ALL CAIRIBU Community Leaders meeting](#) (4 PM Eastern, virtual)
- Nov 10-13: [Society for Basic Urologic Research Meeting](#) (in-person, Orlando, FL)
- Nov 16: [CAIRIBU ARCTICS Community Forum: Research Resources](#) (1 PM Eastern, virtual)
- Nov 30-Dec 2: [Annual CAIRIBU Meeting](#) (in-person, Bethesda, MD)

In 2023, virtual CAIRIBU K12 Scholar Seminars start up again; watch for details. Check the [Events Listing](#) on the CAIRIBU website for updates and other announcements

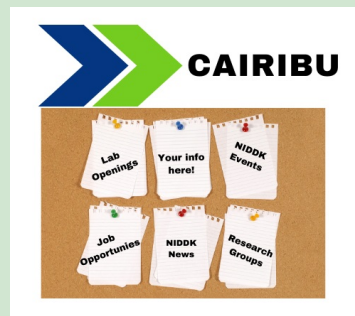
CAIRIBU Grants

The CAIRIBU Interactions Core offers travel grants (*Conference & Data Dissemination Grants*) to trainees and early-stage investigators for participating in scientific meetings. Also, funds are available to any CAIRIBU investigator to visit and learn from another investigator at his/her/their research lab (*Research Training and Development Grants*). More info [HERE](#).

OTHER FUNDING. Check the CAIRIBU website [funding page](#) for announcements. Currently, NIDDK grant applications for the SUITOR Program are sought; details [HERE](#).

Events, Jobs, News

Check the [CAIRIBU Kiosk](#) frequently for updates. Are you an investigator looking for a postdoc or fellow? Let the CAIRIBU Interactions Core know. We will post it on the website and use our social media connections to





HAVE YOU READ?

Are you aware of the newest research from investigators and trainees in the CAIRIBU Community? The list is updated monthly and available on the CAIRIBU website [HERE](#).



HAVE YOU WATCHED?

The [CAIRIBU YouTube Channel](#) features video presentations by CAIRIBU K12 Scholars and from CAIRIBU Catalyst Conversations, CAIRIBU ARCTICS forums, and other presentations/events.



Email the CAIRIBU Interactions Core

George M. O'Brien (U54) Urology Cooperative Research Centers Program

- University of Wisconsin-Madison (2014-2019 and 2019-2024)
- Columbia University (2014-2019 and 2020-2025)
- Stanford University (2021-2026)

Multidisciplinary Urologic Research (KURe) Career Development Programs (K12)

- Duke University
- University of Wisconsin-Madison

Urological Epidemiology (KUroEpi) Institutional Research Career Development Programs (K12)

- UCSF-Kaiser Permanente
- University of Michigan

Kristina L. Penniston, PhD, RDN, FAND
 PI, CAIRIBU U24 Interactions Core
 (U24-DK127726)

penn@urology.wisc.edu

Department of Urology, University of Wisconsin School of Medicine and Public Health, Madison, WI

FORWARD P20 Urology Centers

- Mayo Clinic Rochester (2022-2025)
- Duke University (2022-2025)

Exploratory Centers (P20) for Interdisciplinary Research in Benign Urology

- William Beaumont School of Medicine, Oakland University (2021-2023)
- Children's Hospital of Philadelphia-University of Pennsylvania (2020-2022)
- Medical College of Wisconsin (2020-2022)
- University of Alabama at Birmingham (2018-2020 and 2020-2022)
- Albert Einstein College of Medicine (2019-2021)
- Duke University (2019-2021)
- University of Tennessee (2019-2021)
- Vanderbilt University (2019-2021)

Links to websites for all CAIRIBU Centers and Programs are on the CAIRIBU website [HERE](#)

Collaborating for the Advancement of Interdisciplinary Research in Benign Urology

CAIRIBU is a community of NIDDK-funded Centers and Programs whose overarching objectives are to address the gaps in knowledge related to epidemiology, etiology, development, progression, and expression of benign urologic conditions and to train the next generation of leaders in benign urology research

Learn More Here